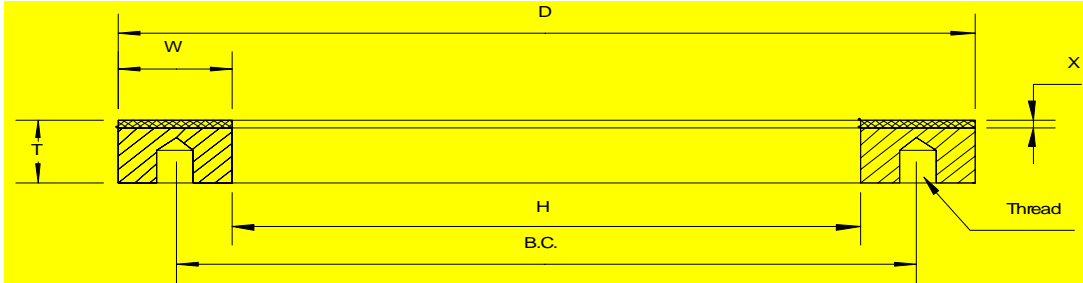


ADVANCED SUPERABRASIVES®

2A2T DIAMOND FACE GRINDING BLANCHARD



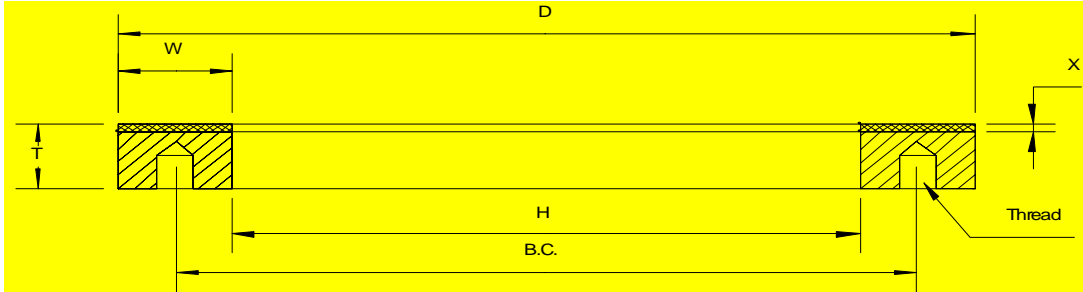
WHEEL SPEC. = D120DBD4100S10

CLICK TO RETURN TO HYPERLINK PAGE

Diameter	Width (W)	Depth (X)	Thickness	Hole Size	Mounting Holes			Advanced Superabrasives #
					Bolt Circle	Tapped Hole Size	Number of Holes	
10"	1/4"	1/4"	1"	8"	9.000"	3/8" 16 N.C.	6	ASD 30000
10"	3/8"	1/4"	1"	8"	9.000"	3/8" 16 N.C.	6	ASD 30001
10"	1/2"	1/4"	1"	8"	9.000"	3/8" 16 N.C.	6	ASD 30002
10"	1/2"	1/4"	1"	9"	9.500"	1/4" 20 N.C.	6	ASD 30003
10"	3/4"	1/4"	1"	8"	9.000"	3/8" 16 N.C.	6	ASD 30004
10"	1"	1/4"	1"	8"	9.000"	3/8" 16 N.C.	6	ASD 30005
11"	1/4"	1/4"	1"	8"	10.000"	3/8" 16 N.C.	6	ASD 30006
11"	3/8"	1/4"	1"	8"	10.000"	3/8" 16 N.C.	6	ASD 30007
11"	1/2"	1/4"	1"	8"	10.000"	3/8" 16 N.C.	6	ASD 30008
11"	3/4"	1/4"	1"	9-1/2"	10.250"	5/16" 18 N.C.	6	ASD 30009
11"	1"	1/4"	1"	9"	10.000"	3/8" 16 N.C.	6	ASD 30010
14"	1"	1/4"	1"	12"	12.750"	3/8" 16 N.C.	8	ASD 30011

ADVANCED SUPERABRASIVES®

2A2T DIAMOND FACE GRINDING BLANCHARD



WHEEL SPEC. = D120DBD4100S10

Diameter	Width (W)	Depth (X)	Thickness	Hole Size	Mounting Holes			Advanced Superabrasives #
					Bolt Circle	Tapped Hole Size	Number of Holes	
18"	1/4"	1/4"	1"	16-9/16"	17.250"	5/16" 18 N.C.	12	ASD 30012
18"	3/8"	1/4"	1"	16-1/2"	17.250"	5/16" 18 N.C.	12	ASD 30013
18"	1/2"	1/4"	1"	16"	17.000"	3/8" 16 N.C.	12	ASD 30014
18"	3/4"	1/4"	1"	16-1/2"	17.250"	5/16" 18 N.C.	12	ASD 30015
18"	1"	1/4"	1"	16"	17.000"	3/8" 16 N.C.	12	ASD 30016
20"	1/2"	1/4"	1"	18"	19.000"	3/8" 16 N.C.	14	ASD 30017
20"	3/4"	1/4"	1"	18-1/2"	19.250"	1/4" 28 N.F.	12	ASD 30018
20"	1"	1/4"	1"	18"	19.000"	M 10	12	ASD 30019
22"	3/8"	1/4"	1"	20-1/2"	21.250"	3/8" 16 N.C.	12	ASD 30020
22"	3/4"	1/4"	1"	20-1/2"	21.250"	3/8" 16 N.C.	6	ASD 30021

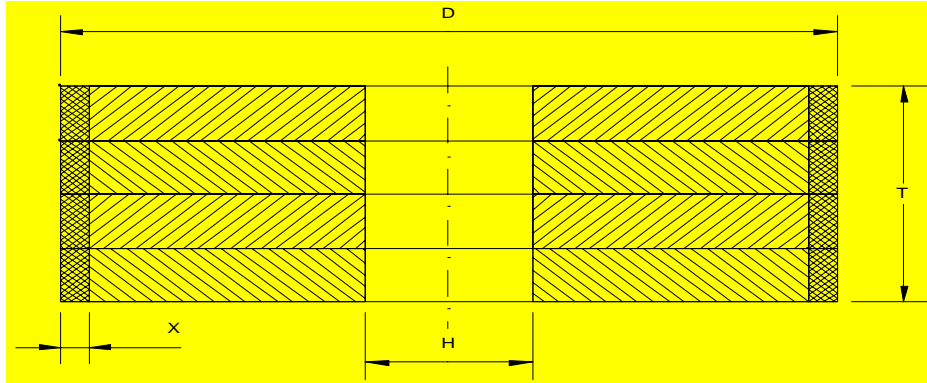
CLICK TO RETURN TO HYPERLINK PAGE

ADVANCED SUPERABRASIVES®

1A1 & 1A1 SETS
DIAMOND

OD - CENTERLESS - SURFACE GRINDING
CINCINNATI - LANDIS - ROYAL MASTER - MADISON - ETC.

CLICK TO RETURN TO HYPERLINK PAGE



WHEEL SPEC. =D120DBD4100S10

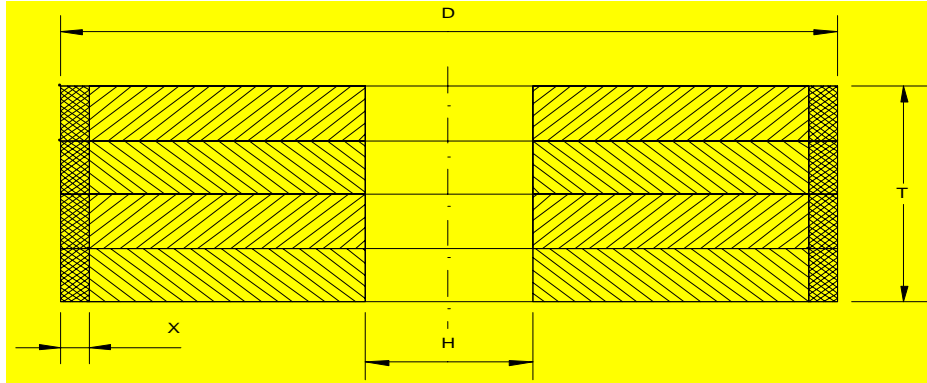
Diameter	Width (T)	Depth (X)	Hole Size	Advanced Superabrasives #
10"	1/4"	1/4"	3"	ASD 30022
10"	1/4"	1/4"	5"	ASD 30023
10"	3/8"	1/4"	3"	ASD 30024
10"	3/8"	1/4"	5"	ASD 30025
10"	1/2"	1/4"	3"	ASD 30026
10"	1/2"	1/4"	5"	ASD 30027
10"	2"	1/4"	3"	ASD 30028
10"	2"	1/4"	5"	ASD 30029
12"	1/2"	1/4"	5"	ASD 30030
12"	3/4"	1/4"	5"	ASD 30031
12"	1"	1/4"	5"	ASD 30032

ADVANCED SUPERABRASIVES®

1A1 & 1A1 SETS
DIAMOND

OD - CENTERLESS - SURFACE GRINDING
CINCINNATI - LANDIS - ROYAL MASTER - MADISON - ETC.

CLICK TO RETURN TO HYPERLINK PAGE



WHEEL SPEC. =D120DBD4100S10

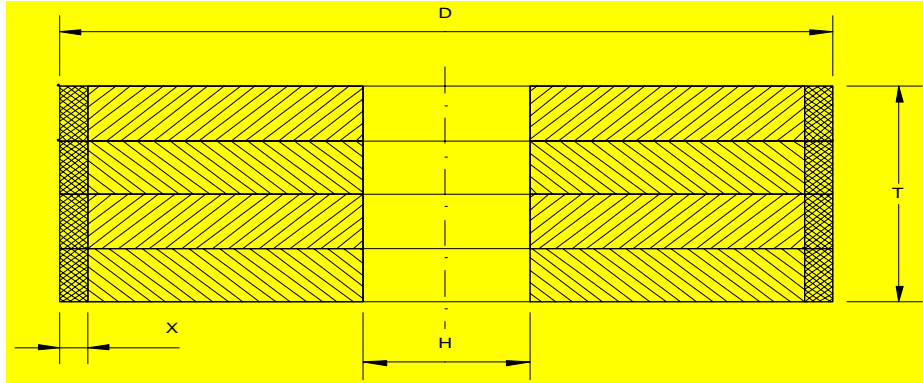
Diameter	Width (T)	Depth (X)	Hole Size	Advanced Superabrasives #
12"	2"	1/4"	5"	ASD 30033
12"	2"	1/2"	5"	ASD 30034
12"	3"	1/4"	5"	ASD 30035
12"	3"	1/2"	5"	ASD 30036
12"	4"	1/4"	5"	ASD 30037
12"	4"	1/2"	5"	ASD 30038
12"	6"	1/4"	5"	ASD 30039
12"	6"	1/2"	5"	ASD 30040
14"	1/2"	1/4"	5"	ASD 30041
14"	3/4"	1/4"	5"	ASD 30042
14"	1"	1/4"	5"	ASD 30043

ADVANCED SUPERABRASIVES®

1A1 & 1A1 SETS
DIAMOND

OD - CENTERLESS - SURFACE GRINDING
CINCINNATI - ROYAL MASTER - MADISON - ETC.

CLICK TO RETURN TO HYPERLINK PAGE



WHEEL SPEC. =D120DBD4100S10

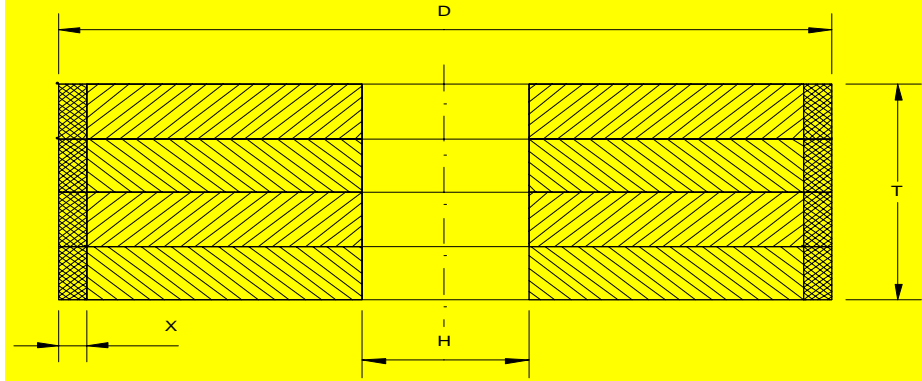
Diameter	Width (T)	Depth (X)	Hole Size	Advanced Superabrasives #
14"	2"	1/4"	5"	ASD 30044
14"	2"	1/2"	5"	ASD 30045
14"	4"	1/4"	5"	ASD 30046
14"	4"	1/2"	5"	ASD 30047
16"	1/2"	1/4"	5"	ASD 30048
16"	1/2"	1/4"	8"	ASD 30049
16"	1/2"	1/4"	12"	ASD 30050
16"	3/4"	1/4"	5"	ASD 30051
16"	3/4"	1/4"	8"	ASD 30052
16"	3/4"	1/4"	12"	ASD 30053
16"	1"	1/4"	5"	ASD 30054

ADVANCED SUPERABRASIVES®

1A1 & 1A1 SETS
DIAMOND

OD - CENTERLESS - SURFACE GRINDING
CINCINNATI - ROYAL MASTER - MADISON - ETC.

CLICK TO RETURN TO HYPERLINK PAGE



WHEEL SPEC. =D120DBD4100S10

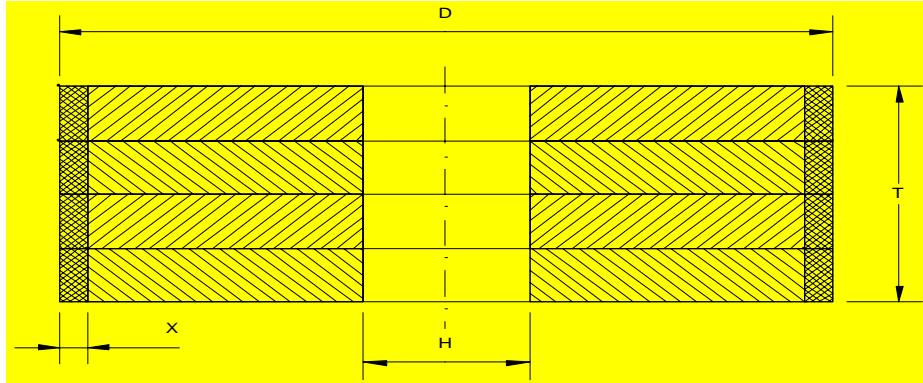
Diameter	Width (T)	Depth (X)	Hole Size	Advanced Superabrasives #
16"	1"	1/4"	8"	ASD 30055
16"	1"	1/4"	12"	ASD 30056
16"	2"	1/2"	8"	ASD 30057
16"	2"	1/4"	12"	ASD 30058
16"	2"	1/2"	12"	ASD 30059
16"	3"	1/4"	5"	ASD 30060
16"	3"	1/2"	5"	ASD 30061
16"	4"	1/4"	8"	ASD 30062
16"	4"	1/2"	8"	ASD30063
16"	4"	1/4"	10"	ASD 30064
16"	4"	1/2"	10"	ASD 30065

ADVANCED SUPERABRASIVES®

1A1 & 1A1 SETS
DIAMOND

OD - CENTERLESS - SURFACE GRINDING
CINCINNATI - ROYAL MASTER - MADISON - ETC.

CLICK TO RETURN TO HYPERLINK PAGE



WHEEL SPEC. =D120DBD4100S10

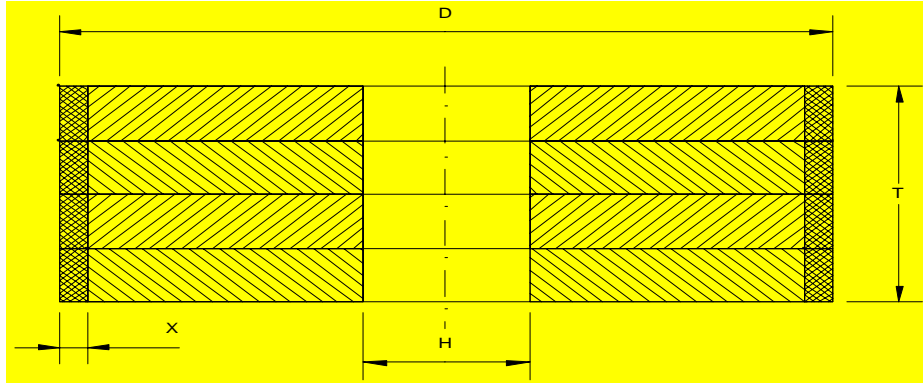
Diameter	Width (T)	Depth (X)	Hole Size	Advanced Superabrasives #
16"	4"	1/4"	12"	ASD 30066
16"	4"	1/2"	12"	ASD 30067
16"	8"	1/4"	8"	ASD 30068
16"	8"	1/2"	8"	ASD 30069
16"	8"	1/4"	12"	ASD 30070
16"	8"	1/2"	12"	ASD 30071
18"	1"	1/4"	12"	ASD 30072
18"	2"	1/4"	12"	ASD 30073
20"	1/2"	1/4"	10"	ASD 30074
20"	1/2"	1/4"	12"	ASD 30075
20"	3/4"	1/4"	10"	ASD 30076

ADVANCED SUPERABRASIVES®

1A1 & 1A1 SETS
DIAMOND

OD - CENTERLESS - SURFACE GRINDING
CINCINNATI - ROYAL MASTER - MADISON - ETC.

CLICK TO RETURN TO HYPERLINK PAGE



WHEEL SPEC. =D120DBD4100S10

Diameter	Width (T)	Depth (X)	Hole Size	Advanced Superabrasives #
20"	3/4"	1/4"	12"	ASD 30077
20"	1"	1/4"	10"	ASD 30078
20"	1"	1/4"	12"	ASD 30079
20"	3"	1/4"	10"	ASD 30080
20"	4"	1/4"	12"	ASD 30081
20"	6"	1/4"	12"	ASD 30082
20"	8"	1/4"	12"	ASD 30083