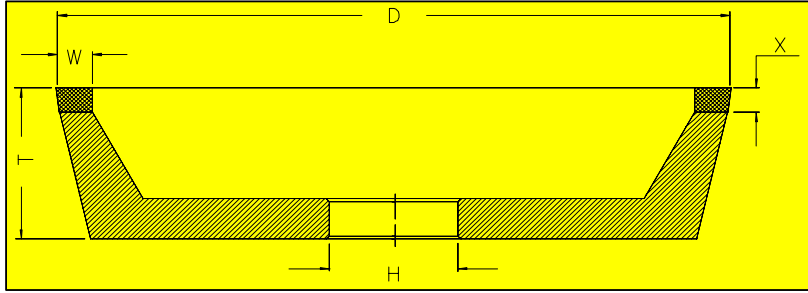


# ADVANCED SUPERABRASIVES®

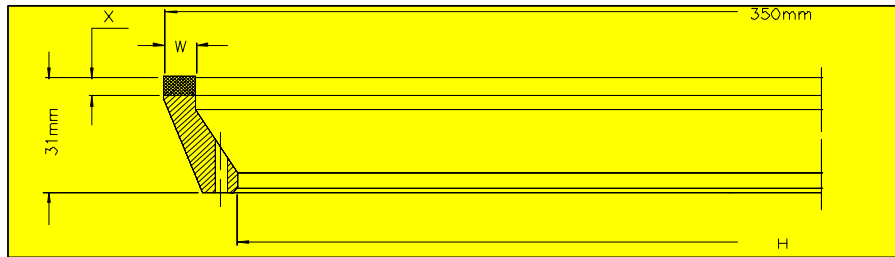
## 11A2 DIAMOND INSERT GRINDING AGATHON 250 PA CNC



250MM X 85MM X 40MM BORE

Width (W)	Depth (X)	Grit Size	Wheel Spec.	Coolant	Advanced Superabrasives #
8MM	6MM	D280	DBR4100BSP	Oil / Syn	ASD 40000
10MM					ASD 40001
12MM					ASD 40002

## 2A2T DIAMOND WENDT INSERT GRINDING



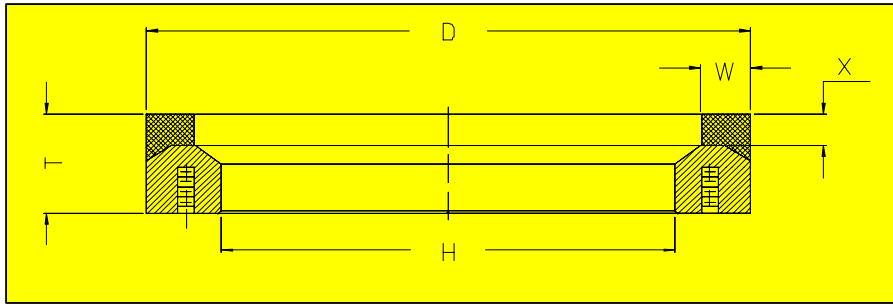
350MM X 31.75MM X 325.22MM BORE

Width (W)	Depth (X)	Grit Size	Wheel Spec.	Coolant	Advanced Superabrasives #
6MM	6MM	D280	DBR4100BSP	Oil / Syn	ASD 40003
8MM					ASD 40004
10MM					ASD 40005
12MM					ASD 40006
15MM					ASD 40007

CLICK TO RETURN TO HYPERLINK PAGE

# ADVANCED SUPERABRASIVES®

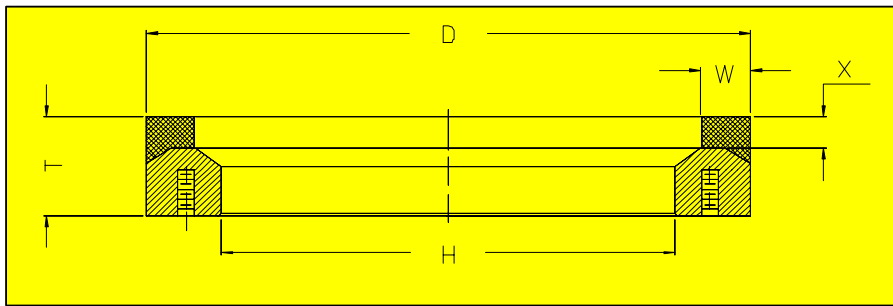
## 2A2T DIAMOND WIT-O-MATIC INSERT GRINDING



6" X 1" X 4.532" BORE

Width (W)	Depth (X)	Grit Size	Wheel Spec.	Coolant	Advanced Superabrasives #
1/4"	1/4"	D240	DBR4100BSP	Oil / Syn	ASD 40008
3/8"					ASD 40009
7/16"					ASD 40010
1/2"					ASD 40011
5/8"					ASD 40012
3/4"					ASD 40013
1"					ASD 40014

## 2A2T DIAMOND WIT-O-MATIC INSERT GRINDING



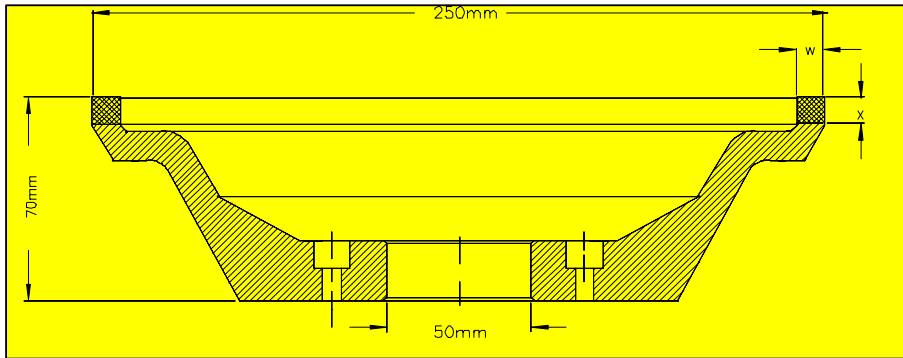
6" X 1" X 4.532" BORE

Width (W)	Depth (X)	Grit Size	Wheel Spec.	Coolant	Advanced Superabrasives #
1/4"	3/8"	D240	DBR4100BSP	Oil / Syn	ASD 40015
3/8"					ASD 40016
7/16"					ASD 40017
1/2"					ASD 40018
5/8"					ASD 40019
3/4"					ASD 40020
1"					ASD 40021

CLICK TO RETURN TO HYPERLINK PAGE

# ADVANCED SUPERABRASIVES®

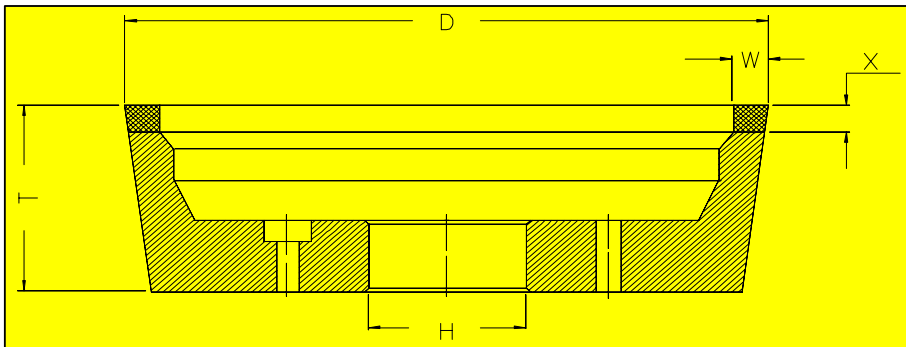
## 11A2 DIAMOND EWAG INSERT GRINDING



250MM X 70MM X 50MM BORE

Width (W)	Depth (X)	Grit Size	Wheel Spec.	Coolant	Advanced Superabrasives #
6MM	6MM	D280	DBR4100BSP	Oil / Syn	ASD 40022
8MM					ASD 40023
10MM					ASD 40024
12MM					ASD 40025

## 11A2 DIAMOND WAIDA INSERT GRINDING



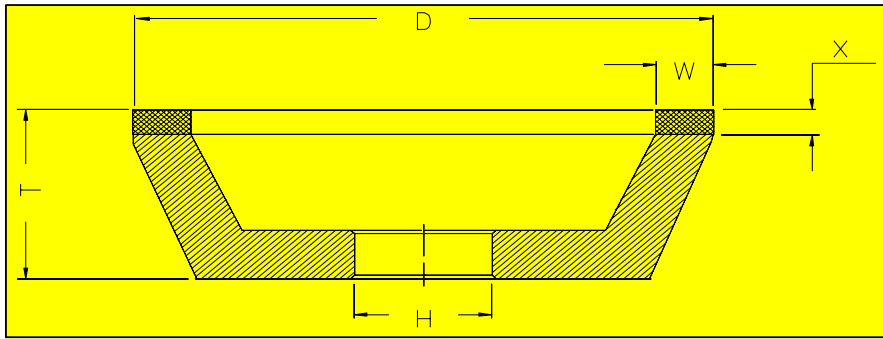
200MM X 85MM X 60MM BORE

Width (W)	Depth (X)	Grit Size	Wheel Spec.	Coolant	Advanced Superabrasives #
6MM	6MM	D320	DBR4100BSP	Oil / Syn	ASD 40026
8MM					ASD 40027
10MM					ASD 40028
12MM					ASD 40029

CLICK TO RETURN TO HYPERLINK PAGE

# ADVANCED SUPERABRASIVES®

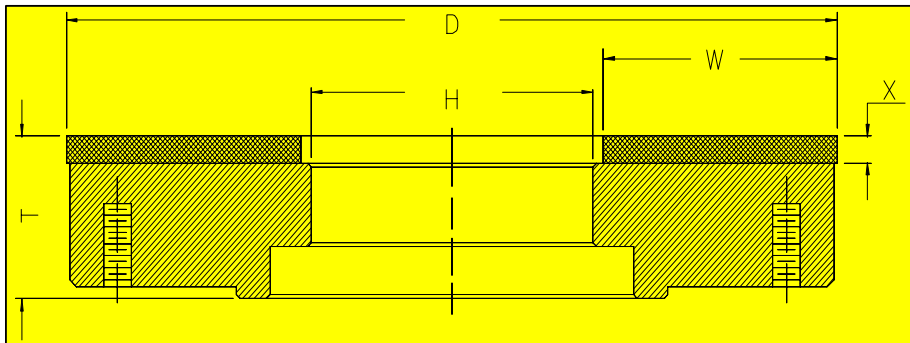
## 11A2 DIAMOND AGATHON INSERT GRINDING



6" X 1-3/4" X 1-1/4" BORE

Width (U)	Depth (X)	Grit Size	Wheel Spec.	Coolant	Advanced Superabrasives #
1/4"	1/4"	D240	DBR4100BSP	Oil / Syn	ASD 40030
3/8"					ASD 40031
7/16"					ASD 40032
1/2"					ASD 40033
5/8"					ASD 40034
3/4"					ASD 40035
1"					ASD 40036

## 6A2C DIAMOND FUJI INSERT GRINDING



350MM X 48MM X 145MM BORE

Width (W)	Depth (X)	Grit Size	Wheel Spec.	Coolant	Advanced Superabrasives #
100MM	1/8"	D220	DBA4100S10	Oil / Syn	ASD 40037
	1/4"				ASD 40038
	3/8"				ASD 40039
100MM	1/8"	D600	DBA4100S10	Oil / Syn	ASD 40040
	1/4"				ASD 40041
	3/8"				ASD 40042

CLICK TO RETURN TO HYPERLINK PAGE